

# **The Orta mosque & The twin Hamam**

7  
**Tsalouxidou Stefania-Eleonora**  
**6<sup>th</sup> grade, 3<sup>rd</sup> Primary School, Veria, Greece**  
**2010-2011**

**The Orta mosque is the oldest one in town**



**It is one of the most remarkable building of ottoman architecture in Veria.**

**It was built in 1490 with porous stones and ancient and byzantine marbles.**





**The Orta mosque is in the center of the town, as its name intimates: Orta mosque means central mosque. Probably, it is about the Sinan Bey mosque. It is a simple, square building with a cupola.**

**The minaret has a very impressive motif that reminds us a stitchery and it consists of continual, successive rhombs.**

**In the base of the balcony, there are many stalactites.**

**The inner wall-painting decoration involves Koran's texts and flowers.**





- During the First World War, the mosque offered hospitality to strange soldiers.**
- In 1938, it was declared as preservable monument.**
- Later, in different periods, it was used as a house, as a musical instruments' workshop, as a marble workshop and as a carpenter's workshop.**
- Today the building is in a bad condition even though it has been restored inside.**

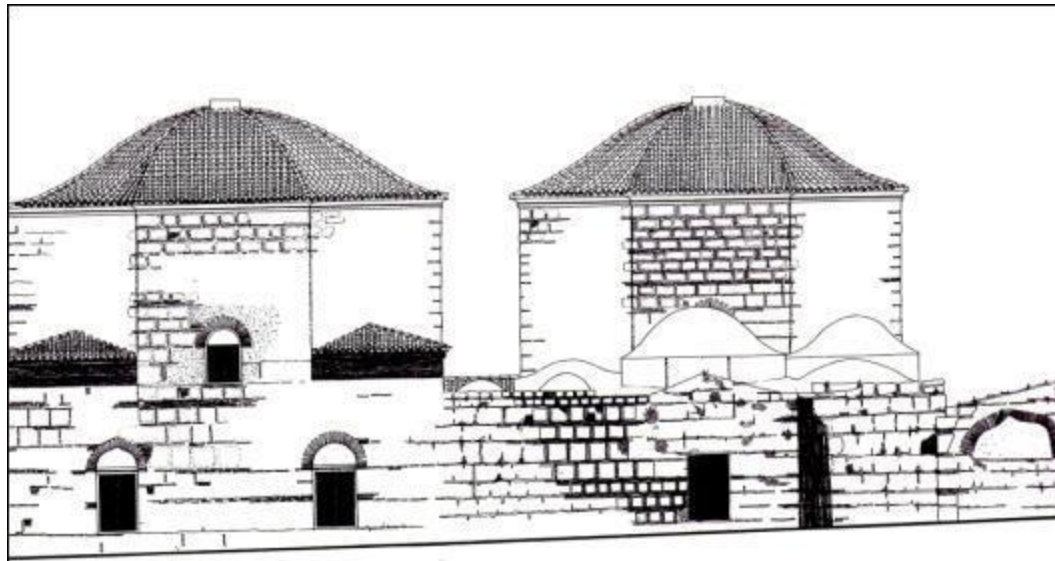


An aerial photograph of the Twin Baths (Hamam-i Hümayun) in Istanbul, Turkey. The image shows the two large, octagonal, domed structures of the baths, which are surrounded by a complex network of red-tiled roofs of surrounding buildings. The architecture is traditional Ottoman, with the baths' domes being a prominent feature. The text "The twin Baths" is overlaid in a large, bold, dark red font, with "(Turkish Hamam)" in a smaller, bold, dark red font below it.

# The twin Baths

(Turkish Hamam)

- In the center of the town there are the twin Baths of Sinan Tuzci (the old owner).
- They were built in the late of 15<sup>th</sup> century and worked until 1930'.
- They consist of two similar parts, the male and the feminine bath.



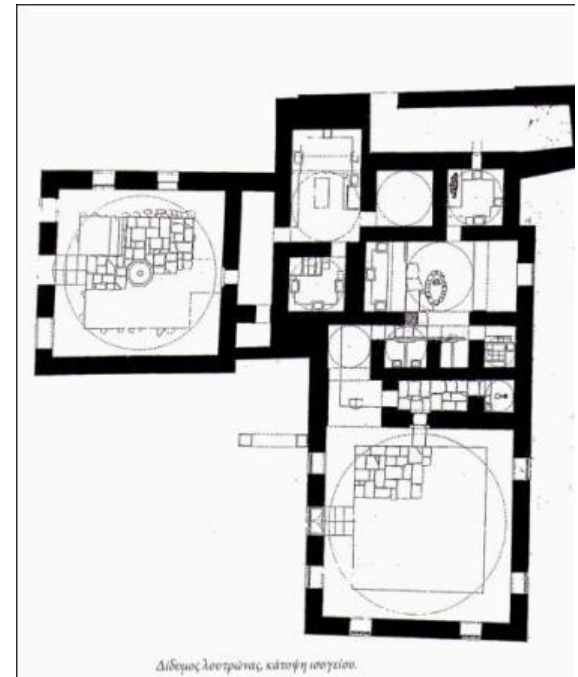






**They are the only twin baths in which the male and the feminine part are involved together in the shape of a “Γ”.**

**Both parts consist of three rooms: the bathhouse, the half heated room and the hot room in direct association with the furnace. They are double-decker with a brick cupola as a roof.**

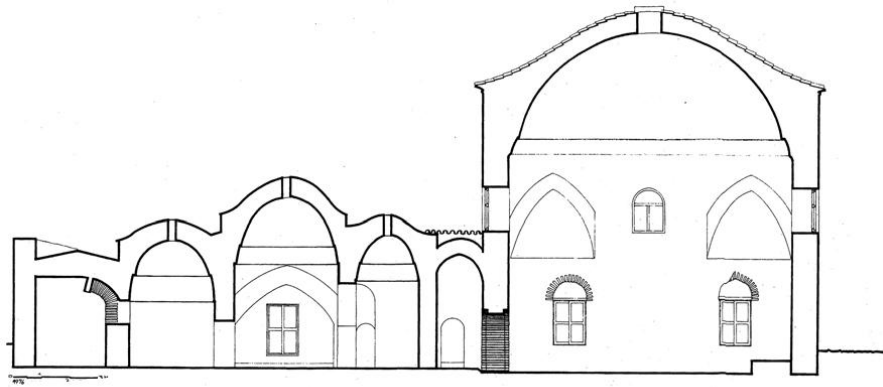






**Inside the male bath you can see the mosaic and some vegetative motifs in the cupola.**

**The male bath was bigger and had a richer decoration than the feminine one.**



- **Since 1963, the twin Baths were preservable.**
- **Today they work as a place of recording antiquities.**